



“Technical” Beaded Bead

Make these unusual, barrel-shaped beaded beads with new Matubo NIB-BIT beads



Material (for one bead):

- Matubo NIB-BIT (16 pcs)
- Matubo 8/0 (32 pcs)
- Matubo Miniduo (32 pcs)
- 11/0 Miyuki seed beads (approx. 0,5 gram)
- 15/0 Miyuki seed beads (approx. 1 gram)
- 16mm wooden or acrylic core bead
- Beading needle and thread (Nymo, Fireline)

Difficulty: For beginners / Intermediate



1) String one NB (narrow end), one Miniduo, one 15/0 and one Miniduo.



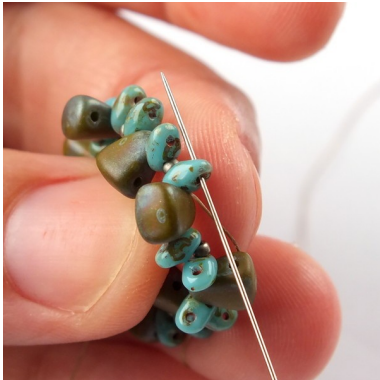
6) Repeat steps 4 and 5 ...



2) Repeat step 1 seven more times (so you have 8 NB beads, 8 15/0s and 16 Miniduos).



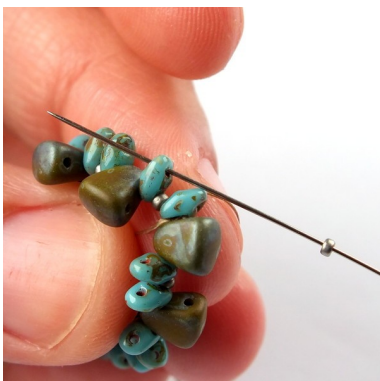
7) ... until you reach the end of the row. At the end of the row add one last NB, then pass through the upper hole of the next MD, one 15/0, upper hole of one more MD and lower hole of the first NB...



3) Slide all the beads to the end of the thread and tie a square knot to form a circle. Then pass through the upper hole of the nearest Miniduo.



8) ... and then pass back through the upper hole of the same NB bead.



4) Add one 15/0 and pass through the upper hole of the next Miniduo.



9) Add one 8/0 and pass through the upper hole of the next NB bead.



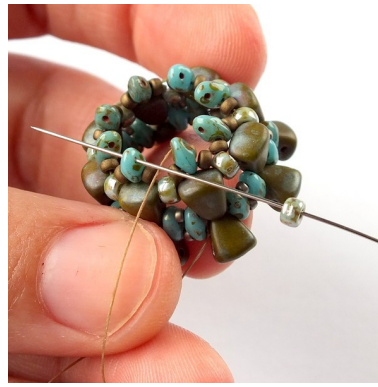
5) Add one NB (narrow end) and pass through the upper hole of the next Miniduo.



10) Repeat step 9, until you reach the end of the row. At the end of the row add one last 8/0 and then pass through the upper hole of the last NB and then through the first 8/0.



11) Add one 11/0, one Miniduo and one 11/0 and pass through the next 8/0 in the row.



16) Add one 8/0 and pass through the upper hole of the next Miniduo.



12) Repeat step 11 ...



17) Repeat step 16 ...



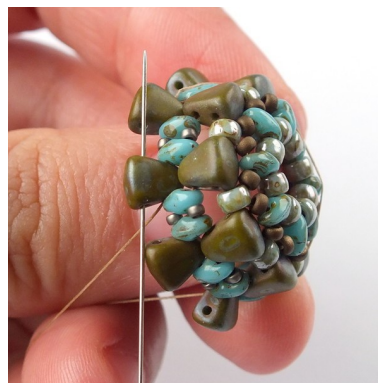
13) ... until you reach the end of the row.



18) ... until you reach the end of the row.



14) At the end of the row pass through the first 11/0 and through the lower hole of the first Miniduo...



19) Weave through beads to get to the upper hole of one of the NB beads on the other side of the bead.



15) ... and then pass back through the upper hole of the same Miniduo.



20) Repeat steps 9 - 18 ...

21) ... on the other side of the bead.
Do not forget to put the core bead inside!



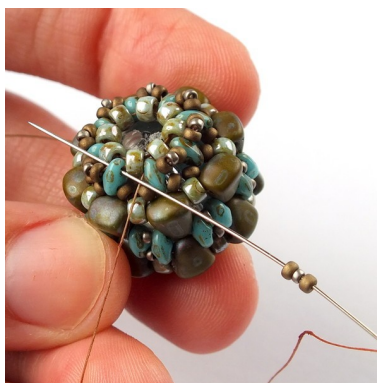
22) Weave through all the eight 8/0s in the last row.



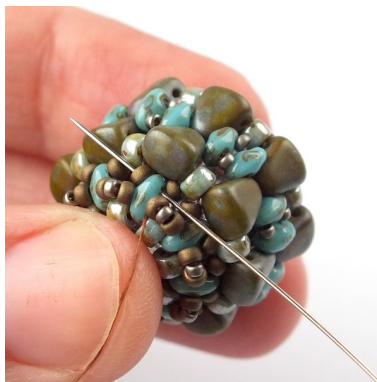
23) Pass through the upper hole of the nearest Miniduo.



24) Add one 11/0, one 15/0 and one 11/0 (or three 15/0s) and pass through the upper hole of the next Miniduo.



25) Repeat step 24 ...



26) ... until you reach the end of the row. At the end of the row pass back through the lower hole of the last Miniduo and through the next 11/0.



27) Add five 15/0s and pass through the nearest 15/0 (in the middle row).



28) Add five 15/0s and pass through the next 11/0, Miniduo (lower hole) and another 11/0 (as shown in the photo).



29) Repeat steps 27 - 28 ...



30) ... until you reach the end of the row.



31) Weave through beads to get to the other side of the bead (to one of the 8/0s on the top ...)

32) ... and repeat steps 22 - 30. The bead is now finished. Tie a few half-hitch knots and cut off all the remaining thread.



Colorways:



Matubo NIB-BIT 00030/27103
 Matubo Miniduo 23980/24209
 Matubo 8/0 63130
 11/0 Miyuki Seed Beads 4212
 Duracoat Galvanized Dk Berry
 15/0 Miyuki Seed Beads 4212
 Duracoat Galvanized Dk Berry



Matubo NIB-BIT 93140/43400
 Matubo 63130/15001
 Matubo 8/0 61000/81800
 11/0 Miyuki Seed Beads 2006 Matte
 Metallic Bronze
 15/0 Miyuki Seed Beads 412
 Opaque Turquoise



Matubo NIB-BIT 03000/65431
 Matubo Miniduo 93140/85001
 Matubo 8/0 00030/01640
 11/0 Miyuki Seed Beads 4212F
 Duracoat Galv Matte Dk Berry
 15/0 Miyuki Seed Beads 4212
 Duracoat Galvanized Dk Berry



Matubo NIB-BIT 53410/85001
 Matubo Miniduo 63030/86805
 Matubo 8/0 03000/65431
 11/0 Miyuki Seed Beads 2006 Matte
 Metallic Bronze
 15/0 Miyuki Seed Beads 190F Matte
 Metallic Silver